

# 80XL

KNUCKLEBOOM LOADERS > BACK OF CAB

FORESTRY



## Introducing the Barko 80XL

There's no disputing it, the Barko 80XL Back of Cab knuckleboom loader (material handler) delivers the highest payload with the lowest installed weight ratio. And it doesn't stop there. Like all Barko products, it provides increased work productivity and the lowest total cost of operation than any other product on the market.

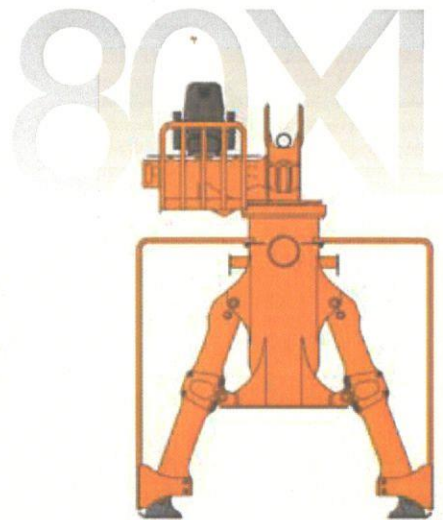
Equipped with more standard features than its competitors, the 80XL lasts longer, performs harder, and delivers the results you expect. There's nothing better than a Barko – Guaranteed!



Visit our website at:  
[www.barko.com](http://www.barko.com)  
to read customer testimonials



**BARKO HYDRAULICS, LLC**  
One Banks Avenue | Superior, WI 54880 | Ph: 715.392.5641 | Fx: 715.392.3931



[WWW.BARKO.COM](http://WWW.BARKO.COM)



# 80XL

KNUCKLEBOOM LOADERS > BACK OF CAB

FORESTRY

## MAXIMUM LIFT CAPACITY

22' 0" (6.70 m) straight boom, less attachment:

Radius	Lift
5' (1.52 m)	9,880 lbs. (4,481 kg)
10' (3.05 m)	9,550 lbs. (4,331 kg)
15' (4.57 m)	6,620 lbs. (3,002 kg)
20' (6.10 m)	5,010 lbs. (2,272 kg)
Full Reach	1,940 lbs. (879 kg)

## BOOM DATA

Main	22' 0"	(6.70 m)
Stick	12' 0"	(3.66 m)
Stick	10' 0"	(3.05 m)

Boom structure: Fabricated box style design with all welded construction. Aluminum Bronze Bushing with grease grooves at boom pivot points. 2-55W Halogen Work Lamps on Stick Boom.

## BOOM REACH

Standard 22' 0" (6.70 m) straight boom:	
Horizontal:	21' 10" (6.66 m)
	from center line of rotation.
Vertical:	34' 5" (10.49 m) when mounted on a 44" truck frame.

## CYLINDERS

Hydraulic cylinders with spherical bearings and wear rings on glands and pistons for long wear. All cylinders are made of heavy wall honed steel tubing. Heat treated cylinder rods have heavy chrome plating. Main and stick boom cylinders have induction hardened rods and bolt on glands.

Main boom:	5" x 36" (127mm x 914.4mm) with 3" (76.2mm) rods.
Stick boom:	5" x 30" (127mm x 762.0mm) with 2.5" (63.5mm) rods.

## POWER SOURCE

Customer supplied Power Take Off.

## HYDRAULIC SYSTEM

45 gallon (170 L) hydraulic reservoir with both suction and return line filters.  
 Pump: One triple gear pump producing 26/21/15 GPM (98/79/57 LPM) at 1500 RPM.  
 Heavy-wall tubing and 4-wire hose throughout system.  
 Main system operating pressure 3200 PSI (220 BAR).  
 Control valves: sectional fine control type with mechanical joysticks.  
 Independent swing circuit.  
 Rotary 5 port manifold to allow continuous rotation.

## SWING SYSTEM

Continuous rotation on 27" (685.8 mm) external tooth turntable bearing powered by a hydraulic motor and a single stage planetary gearbox.

## OPERATOR'S PLATFORM

Rotating platform with beneath-the-seat style valve mounting and foot swing pedal.  
 Comfortable, locking, fold-down seat with arm rests.  
 8-Pass electrical collector

## STABILIZERS/SUBFRAME/PADS

Telescopic stabilizers with 43" (1,092 mm) stroke cylinders enclosed in tubular and fabricated box style assembly with wear plates.  
 Controlled from platform or ground.

## MOUNTING DATA

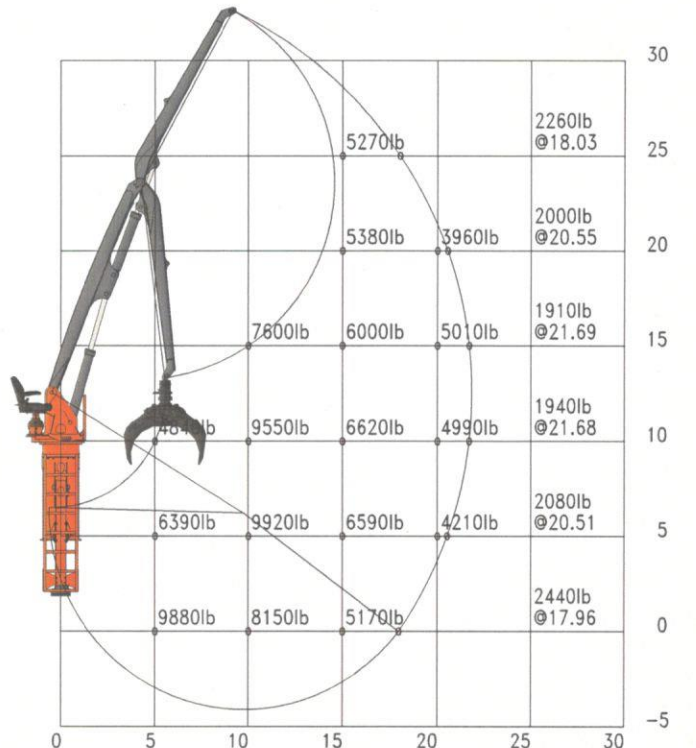
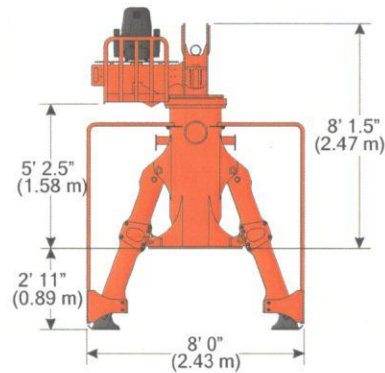
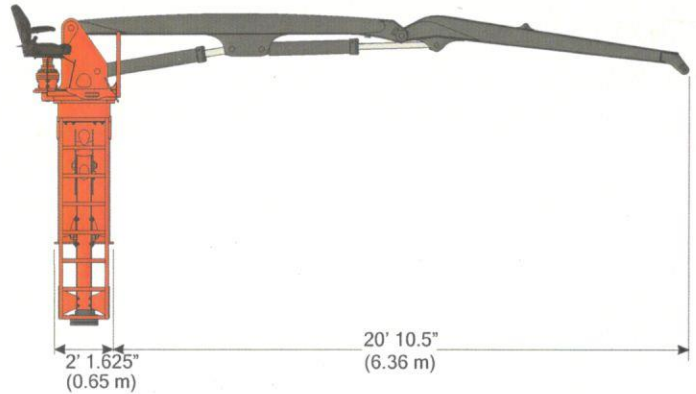
Mounting bolts and support plates are supplied.

## MISCELLANEOUS

Weight: Loader with standard boom with cylinders (excluding grapple and options): 5,305 lbs. (2,406 kg).  
 Dual ladders with non-slip treading.  
 Load securing posts.

## OPTIONS/ACCESSORIES

Spacers to accommodate various frame heights.  
 Oil Cooler Kit with 12V Fan.



11-14-2006 09:02:23 CAPACITIES BASED ON 100% HYDRAULIC EFFICIENCY (S)  
 80 BOC 22' str boom 11/13/06  
 file:8022st.TXT



**BARKO HYDRAULICS, LLC**

One Banks Avenue | Superior, WI 54880 | Ph: 715.392.5641 | Fx: 715.392.3931 | www.barko.com