



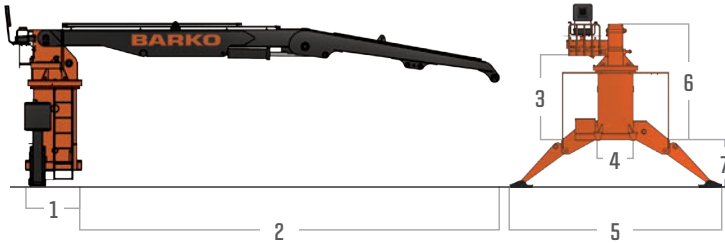
» 160A BACK OF CAB LOADER

SPECIFICATIONS



Specially designed for heavier loads, the Barko® 160A Back of Cab Knuckleboom Loader provides added reach to increase work productivity. Equipped with a wide array of standard features, the 160A lasts longer and performs harder on every job, all at a low total cost of operation.

SPECIFICATIONS

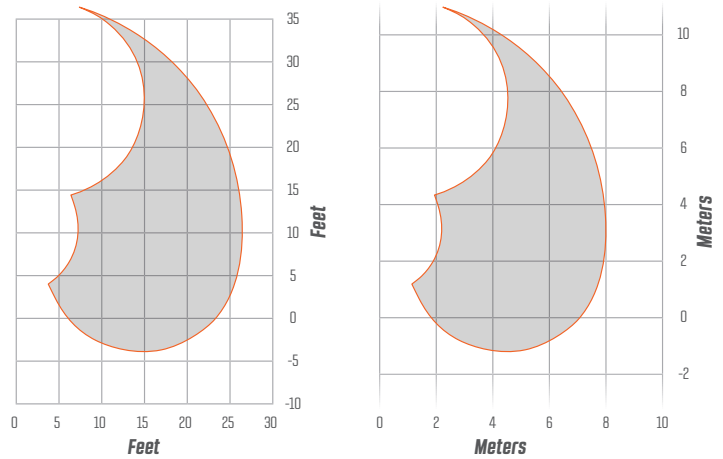


DIMENSIONS

1	3' 5" (104 cm)	5	15' (457 cm)
2	24' 9" (753 cm)	6	8' 5" (257 cm)
3	5' 11" (180 cm)	7	3' 3" (99 cm)
4	2' 10" (86 cm)		

Total Operating Weight	9,750 lbs (4,423 kg) loader with standard boom (excluding attachment and oil)
POWER	
Source	Customer supplied power take-off
HYDRAULICS	
Tank	42 gal. (159 L) with externally serviceable suction screens, 13 micron return line filter, sight gauge
Pump	Triple gear pump producing 31/23/14.5 GPM (118/87/55 LPM) at 1,500 RPM
Operating Pressure	2,500 psi (172 bar) main system
Valves	Sectional control type with mechanical joysticks
Features	Heavy-wall tubing and 4-wire hose; independent swing system with direct-linked foot controls, rotary manifold to allow continuous rotation
BOOM	
Structure	Fabricated tube type design with all welded construction; bronze bushings with grease grooves at boom pivot points
Standard Boom	27' (823 cm) straight
Horizontal Reach	26' 4" (803 cm) from pivot
Vertical Reach	36' 3" (1,105 cm) from ground, when mounted on 44" (112 cm) truck frame
Cylinders	Hydraulic cylinders with wear rings on glands and pistons; heavy wall honed steel tubing; heat-treated cylinder rods with heavy chrome plating
Features	
Main Boom	(2) 6" x 36" (152 x 914 mm) with 2.5" (63.5 mm) rods
Stick Boom	7" x 30" (178 x 762 mm) with 3" (76 mm) rods
SWING SYSTEM	
Rotation	Continuous rotation on 39" (991 mm) turntable bearing, powered by twin motors and planetary swing drives

BOOM SWEEP



MAXIMUM FRONT LIFT CAPACITY

27' (8.2 m) straight boom, less attachment.

Radius	Lift
10' (3.0 m)	18,860 lbs (8,555 kg)
15' (4.6 m)	12,730 lbs (5,774 kg)
20' (6.1 m)	9,580 lbs (4,345 kg)
25' (7.6 m)	6,570 lbs (2,980 kg)
Full Reach	2,500 lbs (1,134 kg)

FEATURES & OPTIONS

OPERATOR PLATFORM

Rotating platform with beneath-the-seat style valve mounting and foot swing pedal

Fold-down seat with armrests

STABILIZERS/SUBFRAME/PADS

(1) set of independently operated 13' 4" (406 cm) foldaway stabilizers with
(2) 6" x 17" (152 x 432 mm) cylinders with 3" (76 mm) rods and bolt-on load locks

STANDARD FEATURES

Mounting bolts and support plates supplied
Dual ladders with non-slip treading

Load securing posts

OPTIONS

Stick boom heel racks
Log rest

*See complete listing of options at www.barko.com.

* Specifications are subject to change.



BARKO HYDRAULICS, LLC

One Banks Ave.
Superior, WI 54880

P: 715.395.6700
info@barko.com | www.barko.com



1 Year	Full machine and attachment
2 Years	Powertrain and major hydraulic components
3 Years	Machine structure

WARRANTY